

# Opening up the retrofit market....

Brian Berry

Chief Executive, Federation of Master Builders



## The Federation of Master Builders (FMB)

- Established in 1941 – emerged from the ashes of the London Blitz.
- UK wide – @7,000 SME and micro companies
- Operating in the RMI and house building sectors.
- FMB inspects all members work – part of our 14 point entry check.
- 40% of FMB companies train an apprentice.



FEDERATION OF  
**MASTER  
BUILDERS**

**fmb.org.uk**



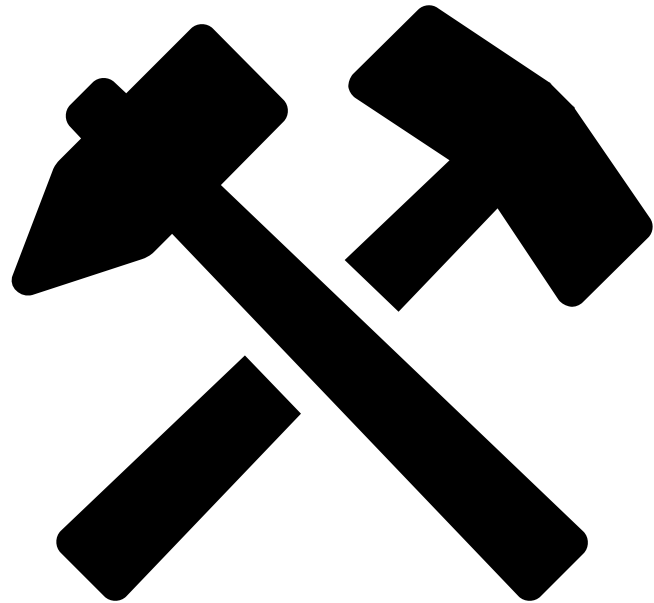
# Retrofit – the scale of the challenge

- Britain has a rich and varied housing stock – 29 million homes.
- Oldest and least energy efficient in Europe.
- 39% of homes built before 1939.
- 2.53 million households living in fuel poverty.
- 85% of our homes will still be in use in 2050.

# Why is retrofit important?

- UK legal commitment to deliver net zero by 2050.
- Our homes contribute 17% of carbon emissions.
- A market worth between £3.5bn and £6.5bn per annum.

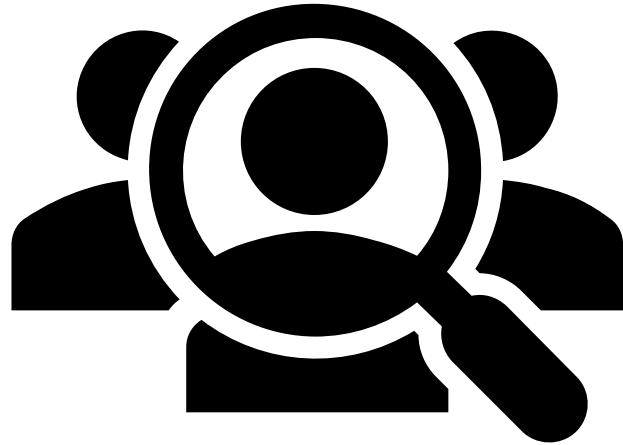




# What's holding retrofit back for builders?

---

- Fragmented industry.
- Unclear which standards to use.
- No market to drive training.
- Substantial skills gap – training doesn't focus on low carbon.
- No qualification requirements to enter industry.
- 89% contractors don't hold formal qualifications for pre-1919 work.



# What's holding retrofit back for consumers ?

---

- Lack of signposting and information about the process of a retrofit.
- Push to decarbonise heating but confusion about fabric improvements.
- What standards/quality do they request?
- Too many cowboy builders.
- Few financial incentives.
- Only 10% of households undertake standalone energy efficiency works.

+

o

Builders  
are ready  
but  
demand  
is low

•

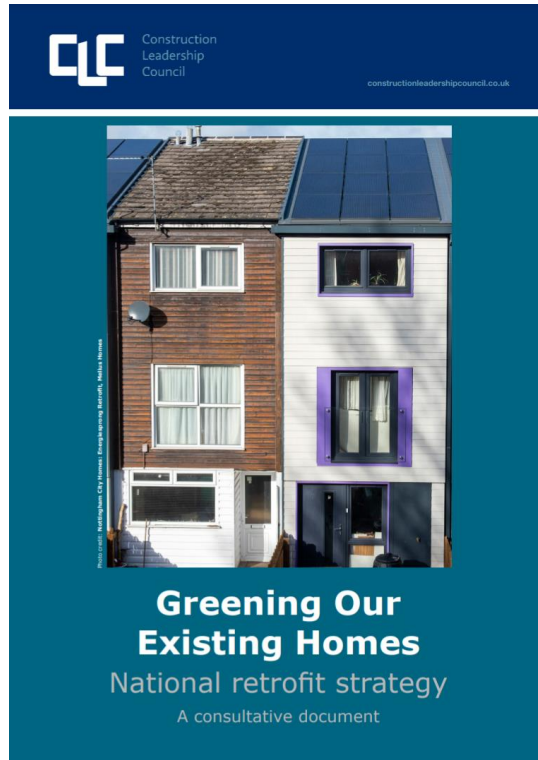
- FMB Members are eager to do retrofit work:

- 68% are 'very confident' or 'fairly confident' they could answer consumer questions about energy efficiency and low carbon tech.

BUT.....

- Consumer demand is low:
- Only 29.5% FMB members report that their clients 'always' or 'often' asking about energy efficiency or low carbon tec.
- 40% of FMB members report that clients 'rarely' or 'never' asked about these questions

# A long term plan .....



- **National Retrofit Strategy**
- **2021-20240**
- **8 interlocking components**
- **Backed by the Construction Leadership Council (CLC)**



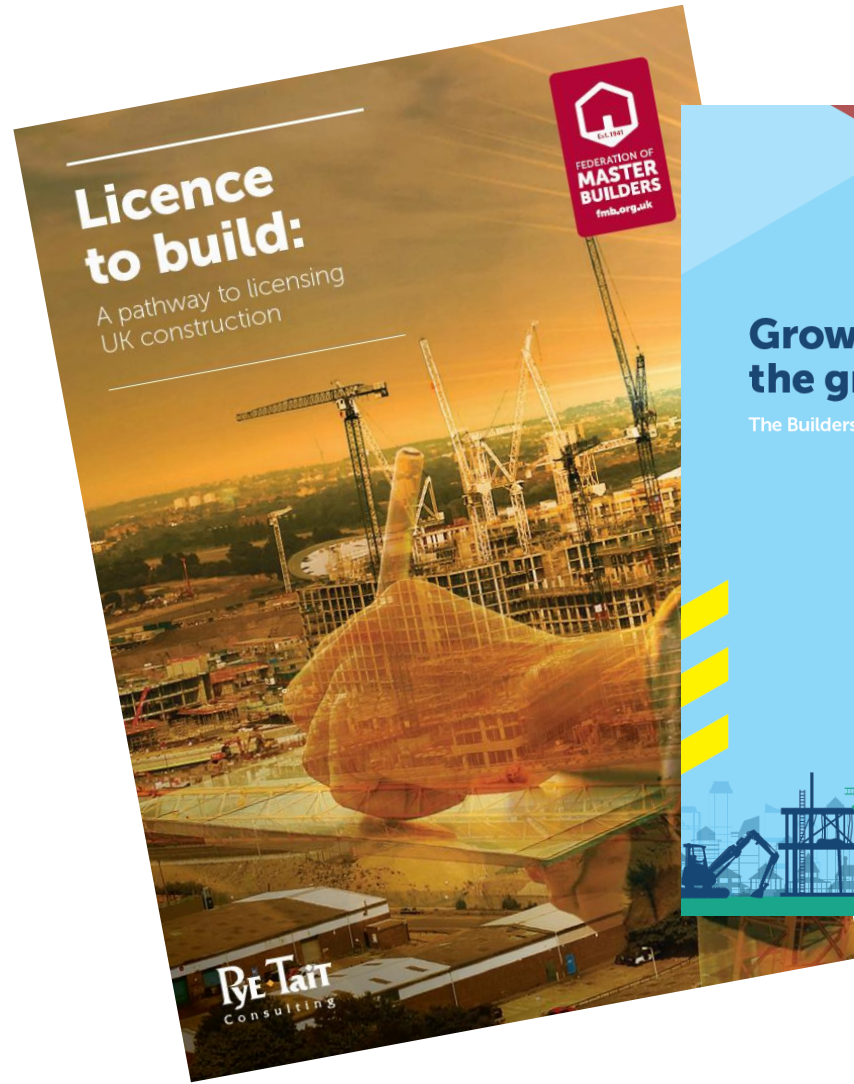


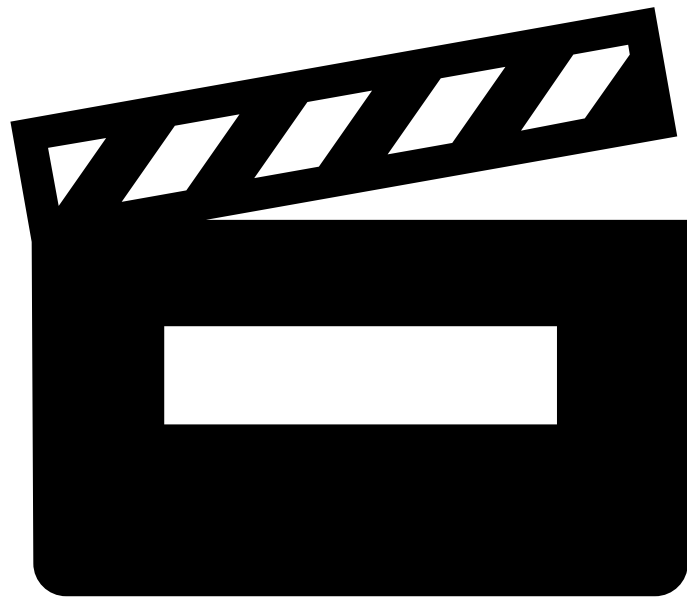
**NATIONAL RETROFIT HUB**

Enabling the delivery  
of housing retrofit at  
scale



# Licensing building the case





# Action .....

## INDUSTRY

- Champion accreditation and training.
- Collaboration and knowledge sharing.

## GOVERNMENT

- 5 million homes to be upgraded.
- Need a long term retrofit plan.
- Need a long-term skills plan – Skills England

Thank you .....