

National Brownfield Institute

Bringing Brownfield Back Into Economic Use

Janet Bayley

Paul Davies

Knowledge Transfer Managers
School of Architecture & Built Environment
Faculty of Science & Engineering



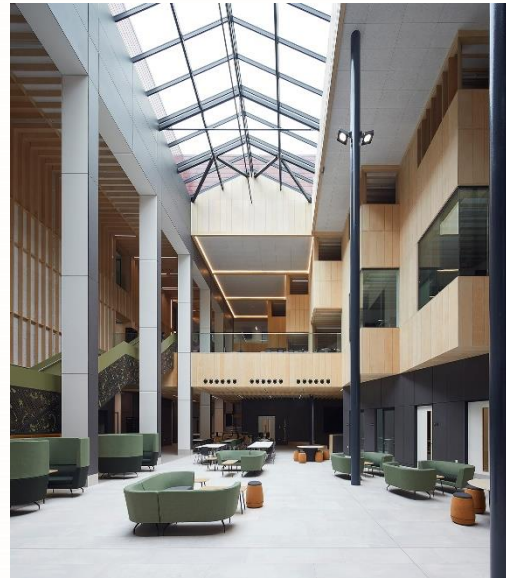
The next 20 minutes

- Springfield Overview
- National Brownfield Institute and Brownfield Sites
- What does that mean for businesses?
- National Brownfield Institute's opportunities
- Equipment/Services
- Strategic Approach
- Summary
- Q&As



Springfield Campus

- School of Architecture and Built Environment
- National Brownfield Institute
- Thomas Telford UTC
- Elite Centre for Manufacturing Skills

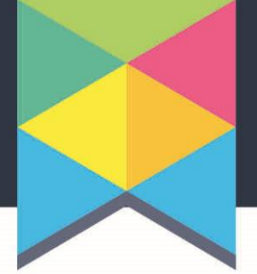




National Brownfield Institute

“Create a world-class brownfield regeneration industry cluster through multi-sector partnership, based at the University of Wolverhampton’s Springfield site.”





Why develop brownfield sites?

- ✓ **Reduces the use of green field sites**
- ✓ **Eliminating blighted landscapes to encourage redevelopment**
- ✓ **Brings social and economic benefits**
 - Employment land
 - Housing
 - Targets
 - Sustainable urban development/Increase green spaces
 - Incentives
 - Brownfield Land Release Fund 2



What is the challenge?





Controlling Unknowns

- **Information**
 - What happened in the past
 - Not available early enough
 - Not comprehensive, accurate or update
 - If available its not in one place or easily accessible
- **Cost**
 - Lack of knowledge & certainty
 - Site investigation
 - Remediation



Brownfield Database

Database of Black Country brownfield sites that allowed sites to be identified and ranked against a set of criteria.

The previous use or industrial history of a site also allows an assessment of the presences of potential contamination to be made, the risks and the potential cost of remediation depending upon proposed land use

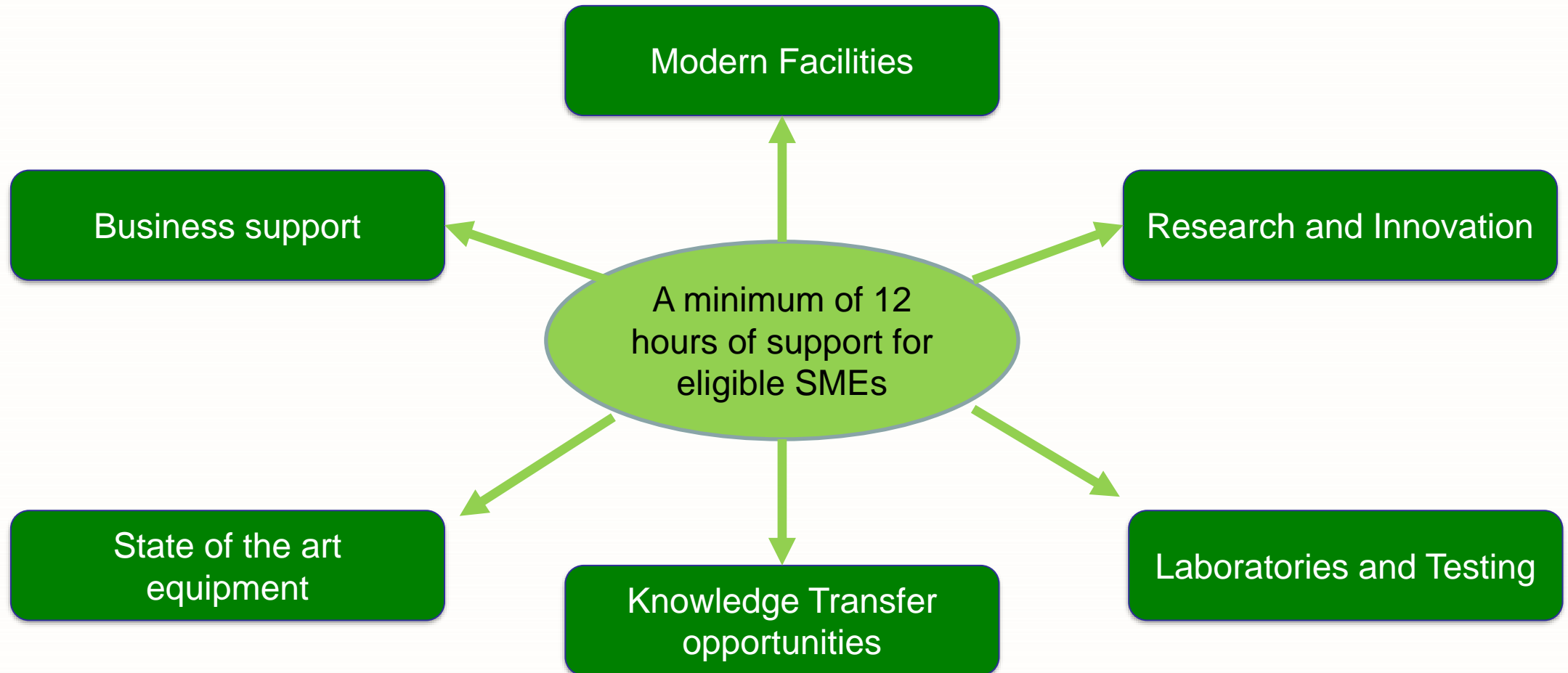
Next Steps

To give an approximate cost

More proactively identify sites using algorithms and programming, Google earth/Google maps



What does that mean for you?





Igloo – 360° Immersive space





Igloo – 360° Immersive space





Igloo – Immersive room

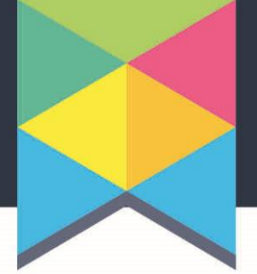




Spot – Boston Dynamics

- Automate routine tasks
- Capture data safely
- Avoid obstacles as they appear
- Navigates terrain
- Carry payloads up to 14Kg





Reality Capture – SLAM Technology

Up to 10 times faster than a terrestrial laser scanner



Leica BLK2GO
handheld laser scanner

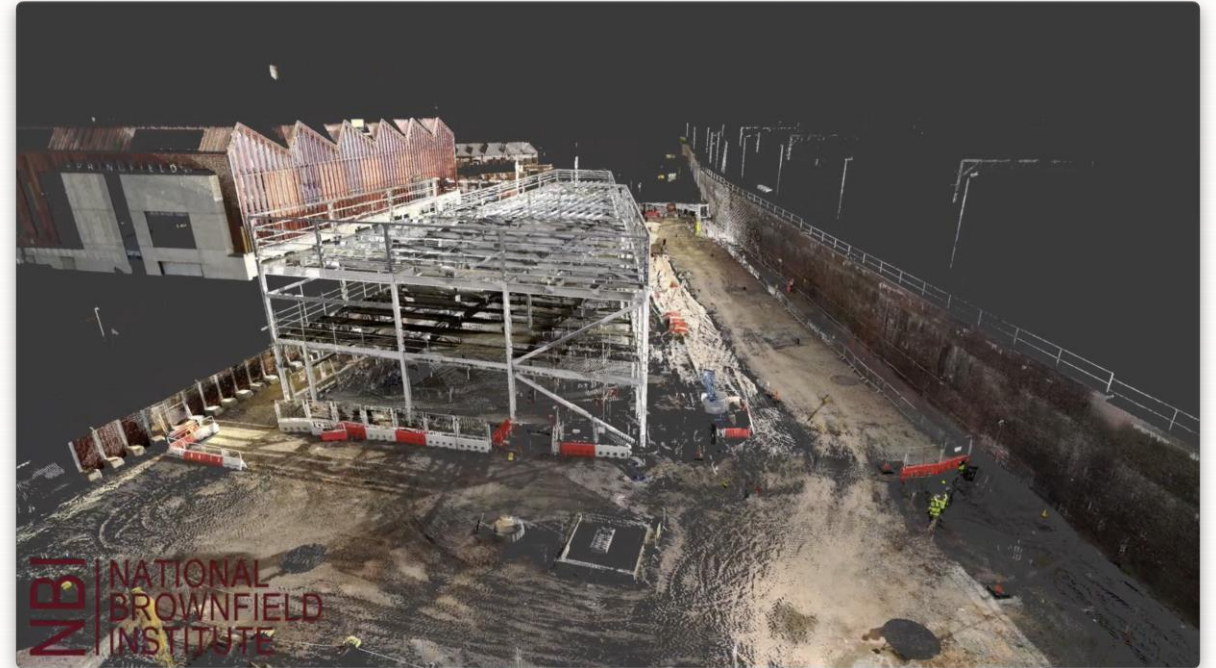


NavVis VLX
mobile mapping system



Accurate point cloud data

Create Floorplans, BIM models and 3D visualisations





Strategic Approach

- Wolverhampton City Council
- Homes England
- L&G Modular Homes
- Department for Levelling Up, Housing and Communities (DLUHC) – Whitehall to Wolverhampton


Department for Levelling Up,
Housing & Communities

Our Location



#WhitehalltoWestMids





Summary

- The only National Brownfield Institute in the UK
- Business Support – **free** to SMEs at the point of delivery
- State of the art building – Events, meeting rooms
- The latest equipment – visualisation of projects, site investigations
- Knowledge Transfer – Seminars, workshops, networking
- Research and Innovation - New technologies, access to academics and industry leaders

National Brownfield Institute

Fully funded support for business

Contact:
Janet Bayley



M: 07970 372767
E: J.Bayley2@wlv.ac.uk

Contact:
Paul Davies



M: 07791 752970
E: P.Davies3@wlv.ac.uk

www.wlv.ac.uk/nbi

National Brownfield Institute

University of Wolverhampton

Springfield Campus | School of Architecture and the Built Environment (SoABE) | Grimstone Street | Wolverhampton | WV10 0JP